

Friction Lock Tuck Top  
Slit Lock Tuck Bottom

**STANDARD RESERVE TUCK (SRT)**

RT

The Standard Reverse Tuck has the manufacturer's joint in the right rear corner. The top closure tucks from the rear to the front and the bottom closure tucks from the front to the rear.

Shown here is a friction lock top closure (easy to open and reclose) and a slit lock tuck bottom (more secure—less apt to disengage from weight of product). The SRT is effective as both a hand set-up and a machine formed carton.

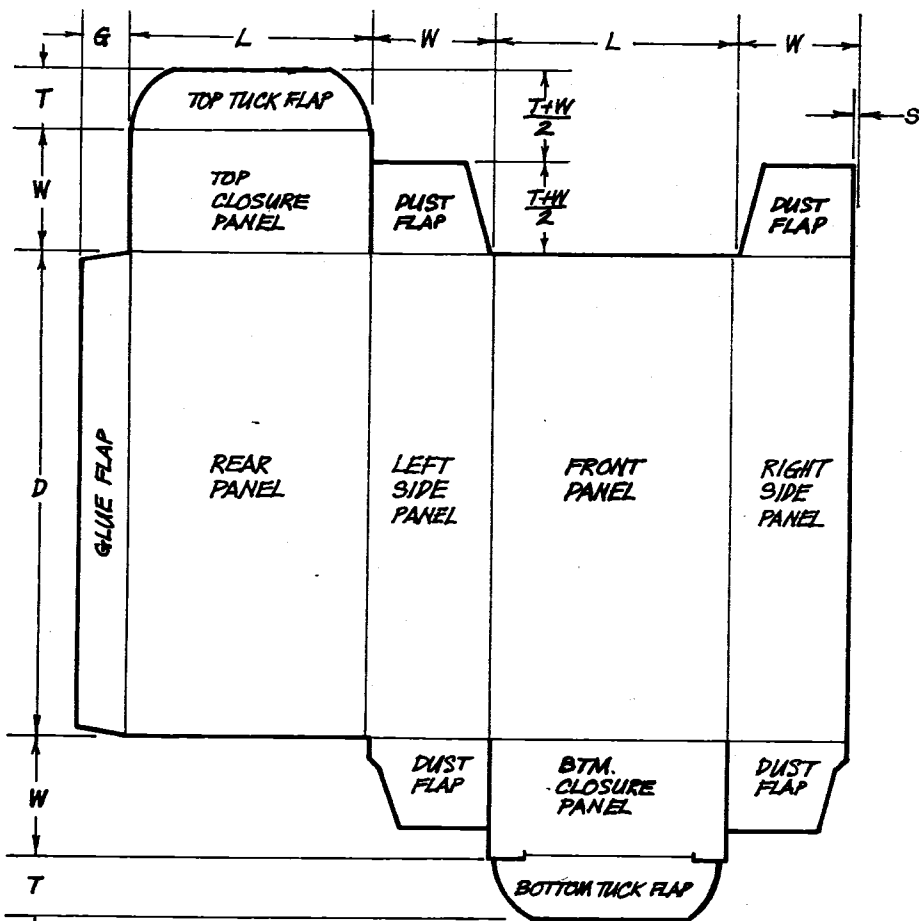


FIG. 1

← GRAIN →

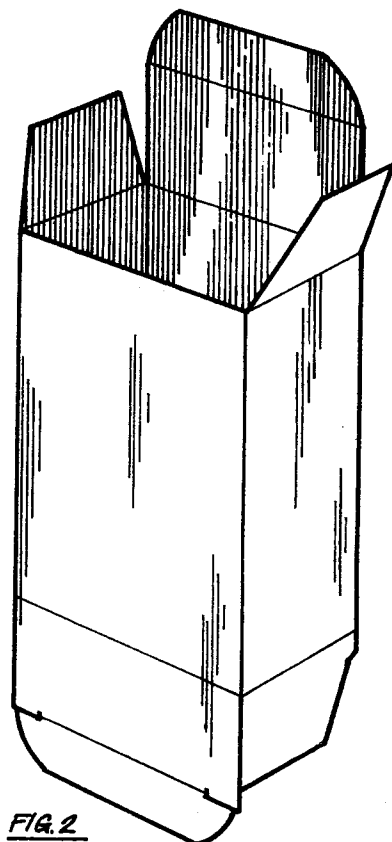


FIG. 2

